

Optyx® 3000 Sorter

With [Optyx® 3000](#), Key Technology's compact optical sorter, smaller-volume processors can now justify automated inspection — and achieve unmatched product quality in a small space and with a smaller investment than previously available.

Optyx 3000 features the same camera, lighting, imaging, shape detection, and ejection technologies found in our [Tegra®](#) and [Optyx® 6000 sorters](#) — proportionately sized for lesser volumes in a self-contained one-meter (42-inch) cabinet.

Optyx®

Common Product Applications

Up to 8 M Ton/hr

- Wet or dry products
- Fruits
- Potatoes
- Chips
- Vegetables
- Cereals, snacks
- Plastics
- Prepared Foods
- Tobacco
- Raisins
- Confections
- Nuts

Other applications may be used on this equipment. Call Key to learn how your product(s) may benefit from this or another Key system.



Rapid Payback

- Eliminates costly hand-sorting labor
- Great for recovering usable rejects from other sorter lines
- Enhances product quality by accurately detecting and removing defects

Smaller Footprint

- Narrow profile unmatched by other industry sorters and Key sorters
- Only one meter wide
- Slips easily into existing layouts

Simple User Interface

- See what the sorter sees

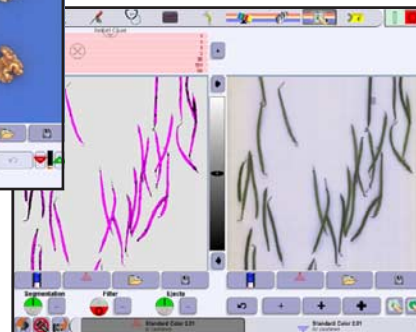


Superlative Performance

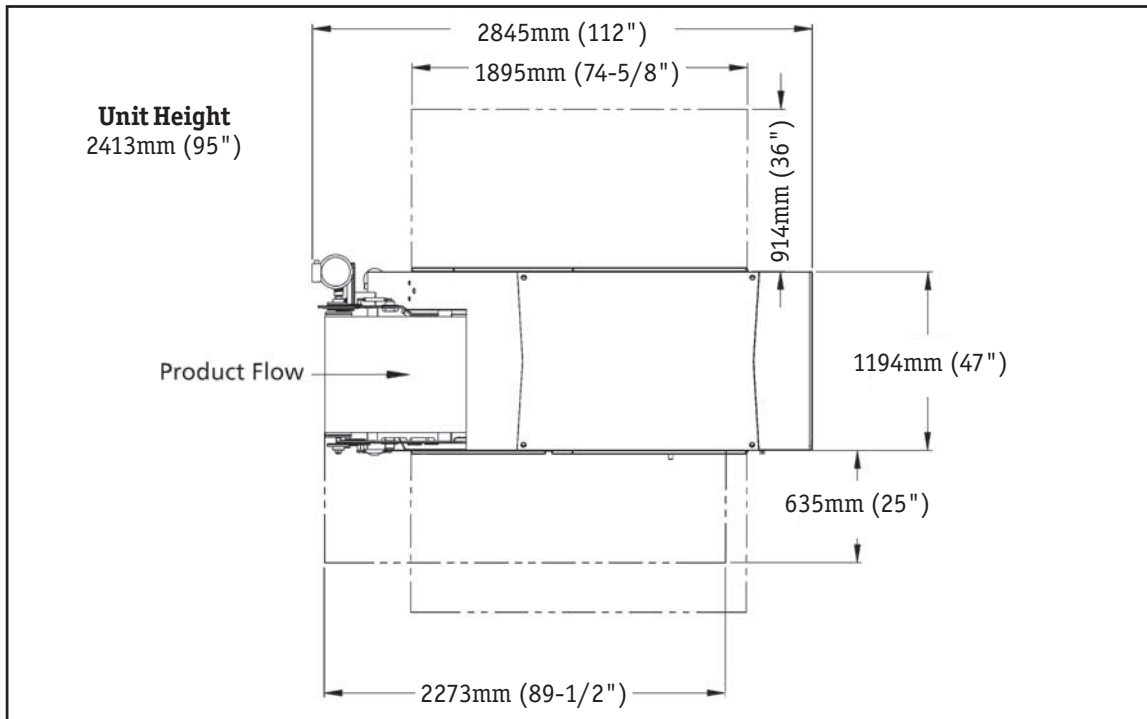
- Equipped with advanced laser, camera, lighting, vision engine, and ejection technologies
- Configured for lower-volume sorting requirements
- Camera/lighting options include full color, Vis/IR, and UV
- Ethernet connectivity for remote operation and troubleshooting

Easy to Set-up, Simple Sanitation

- System is self-contained with no ancillary modules
- Just connect power, water, air and sort
- Surfaces designed for easy access and total washdown
- Minimal horizontal surfaces to collect debris



Optyx[®] 3000 Sorter



Maximum Color Recognition

- Uses powerful high intensity discharge (HID) lamps
- Inspection zone is flooded with light

High-Performance Belt

- Belt is air-tensioned for consistent tracking
- Cantilevered design allows quick access to belt for slipping the belt on and off for fast application changeovers

Specifications

Utility requirements

- Air: clean, dry; 20–80 scfm (0.5–2 m³/min) typical @ 100 psi (7 BAR)
- Water: 0.25–0.5 gpm (1–2 l/min) at 50psi (3.5 BAR), peak 2 gpm (8 l/min); at maximum 70° F

Electrical requirements

- Sorter: 3 hp (2.24 kW)
- Infeed Shaker: 1 hp (0.75 kW)
- Compressor (not included): 50 hp (37.28 kW) recommended
- Ethernet connection

Voltages

- 200–240 VAC, 1 phase, 50/60 Hz, 40 A max

Available with Raptor Laser Technology

- Combined with key's camera technology, provides unprecedented sorting capability
- Aggressive targeting of defects and foreign material

Remote Monitoring and Operation

- Integrated OPC and VNC servers allow data collection and machine operation from your desk top or around the world

Special Application

Use Optyx with Key Data Management to track your product quality. Optyx can track various attributes of your product and chart them; providing meaningful information to make solid process decisions. These attributes can be color, size, shape, or foreign material based.

Improve Process Control

- Real-time information flow – act on current information
- Connect to plant network – use information directly to adjust equipment
- Simpler user interface – easily set length category, size threshold, and product specifications
- Customizable graphing capabilities – display tailored information

Improve Productivity, Quality, and Yields

- Save labor with 100% inspection – reduce manual sampling
- Detect quality variances immediately – take immediate action
- Measure flow in real time – optimize product recovery and throughput
- Operate with simple user interface – save training time and costs